

Release Notes



Univerge SL2100 PCPro 5.00.00

Product	-	SL2100
Version	-	Release 5.00.00
Date	-	12-Dec-2022
Document Reference	-	FCO 2022.044
Category	-	Maintenance Release
Issued by	-	NEC Enterprise Solutions EMEA

Queries concerning this document can be addressed to SMB.TECHSUPPORT@EMEA.NEC.COM

Great care has been taken to ensure that the information contained in this document is accurate and complete. Should any errors or omissions be discovered or should any user wish to make a suggestion for improving this document, they are invited to send the relevant details to supportcentre@emea.nec.com

Disclaimer: Our products are subject to continuous development and improvement. Therefore additions or modifications to the products after mentioned date may cause changes to the technical and functional specifications. No rights can be derived from the contents of this document. NEC Nederland B.V. and/or its respective suppliers make no representations about the suitability of the information contained in this document and related graphics published as part of the services for any purpose. This document and related graphics are provided "as is" without warranty of any kind. NEC Nederland B.V. and/or its respective suppliers hereby disclaim all warranties and conditions with regard to this information, including all warranties and conditions of merchantability, whether express, implied or statutory, fitness for a particular purpose, title and non-infringement. In no event shall NEC Nederland B.V. and/or its respective suppliers be liable for any special, indirect or consequential damages or any damages whatsoever resulting from loss of use, data or profits, whether in an action of contract, negligence or other tortious action, arising out of or in connection with the use or performance of information available from the services. This document and related graphics published on the services could include technical inaccuracies or typographical errors. Changes are periodically added to the information herein. NEC Nederland B.V. and/or its respective suppliers may make improvements and/or changes in the product(s) and/or the program(s) described herein at any time. The example companies, organizations, products, domain names, e-mail addresses, logos, people, places and telephone numbers depicted herein are fictitious. No association with any real company, organization, product, domain name, e-mail address, logo, person, place or telephone number is intended or should be inferred.

All rights reserved. Reproduction in whole or in part is prohibited without the written consent of the copyright owner. This document is provided for information only. NEC Enterprise does not provide any warranties covering this information and specifically disclaims any liability in connection with this document. NEC and the NEC logo are trademarks or registered trademarks of NEC Corporation that may be registered in Japan and other jurisdictions. All trademarks identified with © or TM are registered trademarks or trademarks of their respective owners. Models may vary for each country, and due to continuous improvements this specification is subject to change without notice. Please refer to your local NEC contact(s) for further details.

Contents

1. INTRODUCTION	3
2. IDENTIFICATION	3
3. COMPATIBILITY	3
4. UPGRADE INSTRUCTIONS	3
5. FUNCTIONAL CHANGES	4
6. SOLVED PROBLEMS	7
6.1. List of Solved Problems	7
6.2. List of Previously Solved Problems	8
7. KNOWN PROBLEMS	15
8. SECURITY	15
9. MATERIALS	15
9.1. Physical Distribution	15
9.2. On-line Distribution	15

1. INTRODUCTION

This FCO provides information about the New Version Release of Univerge SL2100 PCPro Software.

2. IDENTIFICATION

Version 5..00.00

3. COMPATIBILITY

This version is compatible with all SL2100 software versions.

However to use the new commands and easy edit items it is necessary to use the latest SL2100 (5.00.00 or above) software.

4. UPGRADE INSTRUCTIONS

1. Install 5.00.00
2. Open PCPro.
3. The main page will display 5.00.00

5. FUNCTIONAL CHANGES

Support for SL2100 R5.0 Features:

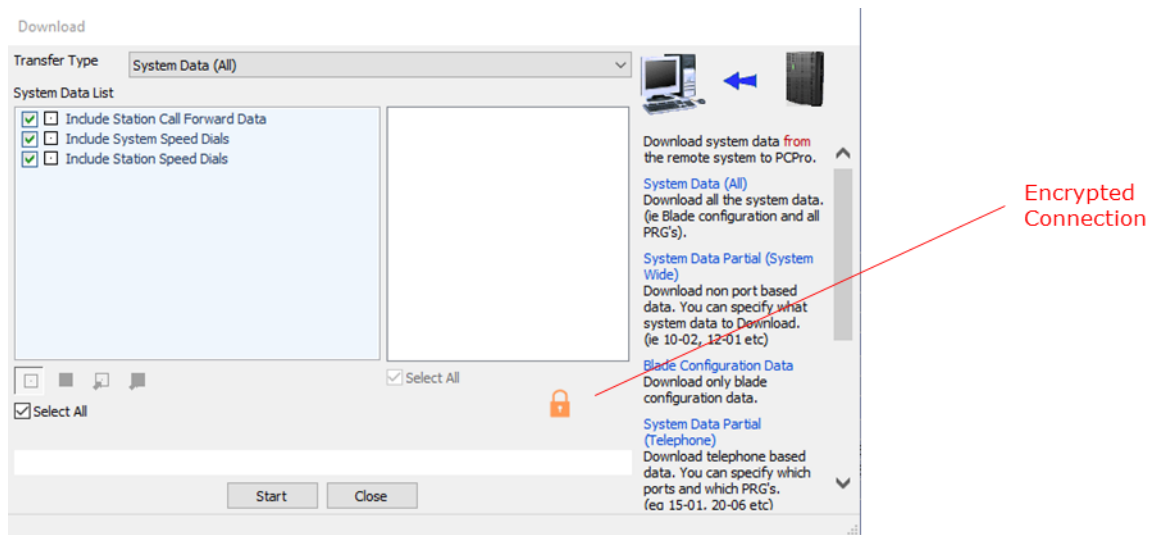
- License Subscription
- Emergency numbers, expanded to 20 entries
- New default data for 10-12-20 TLS Setting - 'Flexible'
- New CMD 20-25-21, CPN Setting of Off-Premise, Caller ID / PRG21-13
- Security update, masked passwords 47-18-07, 47-19-05, 90-28 and 90-31-03.
- Security update, 90-28 default password has been removed.
- New Mobile extension icon added to Function key template port selection and Extension sliding pane.

5.1 SECURITY CHANGES

A number of security enhancements have been made as part of the ongoing improvements on the product.

The key change is the encryption of the config file and PCPro connection.

- 1) PCPro now has an encrypted connection to the SL2100.



It is important to understand the changes in compatibility this causes:

PCPro version	Main Software 3.10.01 with encryption	Main Software 3.00.00 without encryption or older versions (encryption not possible)
3.10.02 (Encryption)	Connected (Encrypted)	Connected (No Encryption)
Pre 3.10.02 (No encryption)	Cannot Connect	Connected (No Encryption)

2) SL2100 has a fully encrypted Database when downloaded.

It is important to understand the changes in compatibility this causes:

	Config File loading to system	
	Main Software 3.10.02 Encrypted	Pre 3.10.02 Non-encrypted
New PCPro 3.10.02	Yes	Yes *1*2
Non-Encryption PCPro Pre 3.10.02	No *3	Yes

*1 New PCPro can load a non-encrypted PCPro file which a non encrypted PCPro saved.

*2 A Non-encrypted system cannot be loaded with an encrypted PCPro file.

*3 A Non-encrypted PCPro cannot load a PCPro file to new system.

3) OpenSSL upgraded to 1.0.2u.

Improvement in the OpenSSL support. PCPro uses OpenSSL for its encrypted connection.

6. SOLVED PROBLEMS

6.1. List of Solved Problems

The following reported problems are solved with this upgrade:

Reference	Description
F210729001 F210723001	Include the diversion Header for divert over SIP Trunks
ITE 79884	Previously added to SV9100 CP20 R12 for BT SIP carrier. Set the following: 84-39-42 to 'Mode 1' and 20-25-21 to 1 (21-13) for diversion header to be included.
	15-22-02 PCPro mismatch of items 1 and 2
	Correction added to PCPro, items 1 and 2 misaligned with system data.
	Mobile Extension type missing, from Function key template and sliding panes
	New icon added to Function key template port selection and Extension sliding pane.
	System data 14-01 items have become misaligned as you scroll down the command.
	Changes added to page, to correct misalignment.

6.2. List of Previously Solved Problems

The following reported problems are solved previously:

4.20.03

Reference	Description
	South Africa script change request
ITE81879	New updated script added 'South Africa V1.01', also updated in the Initial setup wizard' updated 20-25-02 and 82-04 timers

4.20.02

Reference	Description
F220112001	BT Testing T302 support sending domain name in the Contact Header
	84-39 option 16, Items re-named to better describe use.

4.20.00

Reference	Description
F200820001	Name sending and receiving over SIP trunk
F201124002 F201124003 MRDB 4909 MRDB 4810 ITE 74686 ITE 74105 ITE 73737	For incoming calls it should receive the Display part of the From header and display to the MLT user, For outgoing calls it should populate the station name from 15-01-01 into the Display part of the From header. New item 84-39- Option 4: Outgoing INVITE Message FROM Header Display Part. New mode - Mode 6: Use Extension Name Information, added to resolve issue
F211205001	Mobile Switch Off announcements (Early Media) doesn't work
ITE 79442	Few of our customers have reported that Mobile Switch Off announcements (Early Media) doesn't work in SV9100 with Etisalat SIP Trunk. New item 84-39- Option49: Change the behaviour when system receive 2nd 180 Ringing without SDP after negotiating. New Modes - Mode 0: Send Local Ring Back Tone and Mode 1: Send Early Media , added to resolve issue.
F210506001	SDP Version is not incremented - CYTA
F190717001 F171005001 ITE 61872 F200408001	When SDP properties are changed by SIP carrier SV9100 does not increment SDP version and call is dropped by network provider. New items 84-39 - Option50: Change behaviour when system receives Invite Message with SDP for session time negotiating. New Modes - Mode 0: Default option, no change, Mode 1: Increment SDP Session ID when received SDP session ID that has been incremented from Network side, Mode 2: Session ID and Session Version is changed , Mode 3: Session Version only is changed, added to resolve issue.

3.11.04

Reference	Description
F210212001	SIP Carrier requirement for Germany - Privacy Header not sent with default carrier choice.
	Customization item added in 84-39-19 - Mode 2:Add the Privacy Header set the 'None' value.

3.11.03

Reference	Description
	Error setting two Call Fwd immediate on SL2100 PcPro – Allow error check for numbers over 10 digits.
	When the customer uses the 'Initial setup wizard' and selects 'Italy' as the country, we get the following error message – Script updated

3.10.02

Reference	Description
	PCPro (in German) system data 10-13: when opening would crash PCPro.
	PCPro VRS messages 64 (and above) failed to open Properties sliding pane on the correct index when accessed from DDI and Trunk sliding panes

3.00.01

Reference	Description
	PCPro (in Spanish) system upgrade, file location dialogue, text correction from .MDU to .Bin

3.00.00

A number of security improvements have been put in place. It is therefore recommended to upgrade PcPro.

Reference	Description
F190911001	SL2100 PC Pro enhancement for the following fix (previously fixed on SV9100 CP20). SIP Customization option 51: Send 480 temporary unavailable for call time out.
	SIP Customization option 51 (PRG84-39-51). Mode 0 - Send 487 request terminate for call time out. Mode 1 - Send 480 temporary unavailable for call time out
-	SL2100 no setting for 10-24 – for no daylight saving.
	10-01 item 09 - Additional options added 421~444 (GMT + XX, GMT – XX) for fixed time zones.
-	SL2100 Report (alarms) failing to write in current location.
	Alarms.mdb File moved during install from Program files to Documents.

2.00.07

Reference	Description
F190625001	Problem with Netherlands_V1.50.pcs script for SL2100
	A problem has been found when running Netherlands_V1.50.pcs, not adjusting service codes due to a conflict with default data, Script fixed and updated to Netherlands_V1.51.
F190809002	SL2100 PC Pro SIP Script profile error
	A problem has been found when running a SIP script of another profile, not populating data for correct profile. Corrected in v2.00.07

2.00.00

Reference	Description
F180807002	SL2100 PC Pro will require enhancement following fix for Busy Tone on SIP Message 404
	When 84-39-39 is set to mode 1 and 81-01-47 are set to the required tone busy tone is no longer sent and replaced by NU tone when 404 not found is received.

1.80.00

Reference	Description
F190109001	Error installing PCPro 1.55.x0, on some PC's
	Some dealers experienced issue's with a missing file mfc140u.dll after the install of 1.55.x0 Causing PCPro not to open. Resolved in 1.56.00

1.56.00

Reference	Description
F190109001	Error installing PCPro 1.55.x0, on some PC's
	Some dealers experienced issue's with a missing file mfc140u.dll after the install of 1.55.x0 Causing PCPro not to open. Resolved in 1.56.00

1.55.00

A number of security improvements have been put in place. It is therefore recommended to upgrade PcPro.

Reference	Description
-	Spanish Conference tone setting preventing speech.
	A problem has been found when loading Spanish script file, was setting 80-01-01 item 42 to repeat. Preventing speech path from connecting. Corrected in v1.55.00.

1.53.00

A number of security improvements have been put in place. It is therefore recommended to upgrade PcPro.

1.52.00

Reference	Description
A180622001	Copy and paste does not work in PC Pro grid view.
	A problem has been found with v1.50.02 PC Pro. Copy and paste cannot be used to copy the Function Keys and Additional Data from one extension to another

1.51.03

A number of security improvements have been put in place. It is therefore recommended to upgrade PcPro.

Also an SV9100 Fix (so far unreported on SL2100) has been ported over:

Reference	Description
B180613001	Can't get to PRG 15-05
	If the scale of the Display is set to 150% or higher you are not able to get to PRG 15-05. PcPro freezes.

1.50.02

Reference	Description
A140731001	Inmail program no.47-17 allow to add same mailbox number multiple times & multiple messages to the same mailbox.
	Assign a routing mailbox as a distribution mailbox (47-07). In program no.47-17 ,assign a mailbox number e.g 13(ext 113) multiple times (10 times from entry no. 00 to 09) in the distribution mailbox. Record a message into another mailbox Send the message to the distribution mailbox Ext 113 receive 10 messages

1.50.00

Reference	Description
F180405007	Help pages for French and Spanish Languages not opening
	When Pressing F1 within the Easy Edit Pages of French or Spanish PcPro. Help does not open.

1.04.00

- Fix for Easy Edit doesn't refresh between swapping different levels 1,2,3.
- Can't add BRI / PRI in second cab if there is already one in cab 1.

7. KNOWN PROBLEMS

N/A

8. SECURITY

A number of security improvements have been put in place. It is therefore recommended to upgrade PcPro.

9. MATERIALS

9.1. Physical Distribution

Not Applicable

9.2. On-line Distribution

Any software related to this release can be downloaded from the software database on BusinessNet.

<http://businessnet.nec-enterprise.com>